

MOLD SEALS (Packing : 25LM Rolls)

Standard Dynamic Seal – White



RD421-001

Dynamic section mould . Seal for use as a resin seal in RTM or RTM light. Possibility to do the vacuum inside thanks to the installation hit CO-RD20-2056.

Medium Dynamic Seal – Blue

RD20-0013

Medium version of Standard D section mould seal for use as a resin seal in light RTM/RTM tooling



Hard Dynamic Seal – Green



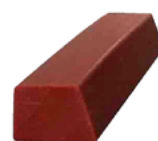
RD20-0011

Hard version of the hollow silicone seal. For high pressure applications

Primary seal for Hollow Dynamic Seal

RD20-3340

Silicone seal used for modeling the dynamic groove joints RD421-001, RD20-RD-0011 and RD20-0013.
Reusable Seal



Sleeve for dynamic seal



RD20-2057

Bag of 20 silicone sleeves for hollow dynamic seal CO-RD421-001. Allows a tight connection.

4 x 8 mm x 4 cm

Silicone Lip Seal

RD20-5895

Silicone Lip seal, to position outside the mould



Neoprene Lip Seal



RD476-003

Neoprene Lip seal, to position outside the mould

Small Lip Section Mould Seal

RD20-0014

Similar section to standard Lip section seal RD20-5895, but approx half size. Can be used for vacuum applications where small bend radii are required.

W : 12mm x H : 10mm



Primary seal for Lip Seal



RD20-3391

Silicone seal used for modeling the throat of the lip seal RD20-5895. Reutilisable seal.

Foam Silicon Groove Profile

RD20-0017

Foam silicon section to provide correct groove, during mould manufacture, for fitting of RD20-5895 lip section mould seal. Easily formed around horizontal and vertical radii. Corners rounded for easy laminating. Non reusable seal.



Resin Runner Profile



RD20-0016

Silicon section to provide correct resinrunner detail, during VRTM mould manufacture. Can be formed around horizontal and vertical radii

Resin Runner Profile

RD20-4530

Silicone seal for a perfect shaping of the canal with resin



Mushroom Silicone Seal



RD20-0092

Internal Mushroom Silicone seal for barrier resin. To be recessed in the groove formed by the joint RD001-002

Primary Seal for Silicone Mushroom

RD001-002

Silicone Seal used for the modeling of the mushroom seal groove RD20-0092

Reusable seal
10 x 5mm



Glue for Silicone seals



RD-COLLE-E43/310

Silicone elastomeric based adhesive curing at room temperature.
Compatible with composite or metal mold.
Hardness 30 Shore A
Immediate tack



-50°C a +180°C - Short Term Working : +250°C

Cartridge of 310 ml

MOLDS INSERTS

3/8" BSP Insert



MM-0002

Machined steel 3/8" BSP Vent Insert to be laminated into composite RTM moulds.
Can be used with MM-0003 in order to accept 6 mm pipe

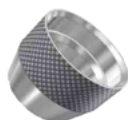
Injection insert 3/8"

XM-0403

Suitable with
XM-0405 et XM-0406



Female Mould Insert



MM-0014

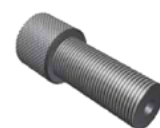
Insert for Injector MM-0305 or vacuum catch pot or valve V400. To be laminated into composite moulds. (One needed for each potential vacuum catch-pot position. Can be plugged with reference MM-0005

Stainless steel Insert 20mm

Mould Vent Liner

MM-0003

Liner used in conjunction with 3/8" BSP Vent insert to reduce vent diameter, for use with 6mm pipe



Mould insert / catchpot for metal tooling



MM-0017

Insert to screw on metal tooling

Injection Insert

XM-0305

Blank Delrin fitting for use with 20mm Mould Insert MM-0014. Supplied with 3/8" BSP female port, but no throughout hole. This can be drilled by customer to suit requirements or used as blanking plug.
Includes 2 x O Rings MS-02-1625



Pipe Insert - Nut Type



XM-0311

Use in conjunction with 20mm. Mould insert MM-0014 to connect a 6mm injection or vent pipe to mould.

XM-0312

Use in conjunction with 20mm. Mould insert MM-0014 to connect a 10mm injection or vent pipe to mould.

Insert d'injection

XM-0304

Insert for flange vacuum fitting with Geka Quick. To accept vacuum Geka Connection.



Injection Valve Threaded Mould Insert



MM-1501

Threaded Insert to accept injection valve V400; will also accept 20mm Insert Blank (MM-0005), or 6/10mm Pipe Inserts (XM-0305, XM-0311 & XM-0312). To be laminated into composite mould or used as insert in machined metal moulds
Includes 1 x O Ring MS-02-3020

Injection valve threaded mould insert for V400

MM-1519

Threaded Insert to screw on metal tooling for Valve V400.
Included O-ring for sealing.



20mm Insert Blank

MM-0005

Blank Delrin fitting for use with 20mm Mould Insert MM-0014. Supplied with 3/8" BSP female port, but no through hole. This can be drilled by customer to suit requirements or used as blanking plug. Includes 2 x O Rings MS-02-1625



Quick pipe connector



XM-0406

Claw fitting for PE rigid pipe 12mm external

XM-0405

Claw fitting for PE rigid pipe 10mm external. Assembled on XM-0404 XM-0305 connectors

Mould Location Cone



MM-0020

Machined cone to be bolted to flange between inner and outer seals. The cone gives positive X-Y-Z location between the upper and lower mould surfaces. Includes M8x50 Socket cap bolt & nut

Toggle clamp



SA-0351

Closing bracket for Light RTM Mould without receiving screed

Injection insert

XM-0404

Insert to stratify for injection or vacuum device. Includes connector XM-0405.
For PE hose 10 mm external



Toggle clamp

SA-0331

Closing bracket for Light RTM Mould with receiving screed



Toggle clamp



XM-0301

Fast action heavy duty Toggle clamp system designed to fit Mould Clamp set above

Mould Clamp Set - Complete

XM-0300

Heavy Duty machine steel Clamp dowel location set for RTM Mould, featuring shimmed male cone and M24 Bolt. Shim allows 'Z' stop adjustment. Designed to be welded directly to mould frame structure



Hose end coupling - 3/4" Female QAC94



ACRAC-GEKA-3/4F

Hose end coupling for vacuum, thread 3/4" Female

Hose end coupling - 3/4" Male QAC95

ACRAC-GEKA-3/4M

Hose end coupling for vacuum, thread 3/4" Male



Hose end coupling - QAC96



ACRAC-GEKA-MANCH

Hose end coupling for vacuum, corrugated for 20mm inside diameter pipe

Hose end coupling - 10 mm

ACRAC-GEKA-MANCH10

Hose and coupling for tube 10 mm



Flange Vacuum Fitting with GEKA Quick-Connector



XM-0304

Insert for flange vacuum connection. To accept vacuum Geka connection. To be laminated into composite moulds. Other fittings to suit this insert are available on request

Through-hull fitting - QAC93

ACRAC-GEKA-PCOQUE

Through-hull fitting for vacuum device Thread 3/4"



CALIBRATION

Calibrated wax pour modelage du contre moule



CO-CC004-005

sheet 610 x 305 x 0,5mm (or 0,18m²)

box of 10 sheets

CO-CC004-010

sheet 610 x 305 x 1mm (or 0,18m²)

box of 8 sheets

CO-CC004-015

sheet 610 x 305 x 1,5mm (or 0,18m²)

box of 8 sheets

CO-CC004-020

sheet 610 x 305 x 2mm (or 0,18m²)

box of 8 sheets

CO-CC004-025

sheet 610 x 305 x 2,5mm (or 0,18m²)

box of 6 sheets

CO-CC004-030

sheet 610 x 305 x 3mm (or 0,18m²)

box of 4 sheets

CO-CC004-040

sheet 610 x 305 x 4mm (or 0,18m²)

box of 4 sheets

CO-CC004-050

sheet 610 x 305 x 5mm (or 0,18m²)

box of 3 sheets

Calibrated cork



CO-LC067-010

very economic flat shapes

1,0 mm x width 1m

sold in meter

CO-LC067-020

very economic flat shapes

2,0 mm x width 1m

sold in meter

CO-LC067-030

very economic flat shapes

3,0 mm x width 1m

sold in meter

ANCILLARY MOULD EQUIPMENT

Injection Valve



XE-0015

Mould injection valve for RTM and Light RTM moulds. Designed to be fitted into threaded Mould Insert MM-1501 (It can also be used with 20mm mould insert MM-0014). 10mm nylon waste pipe and fitting are included as standard. Please note that mould inserts MM-1501 or MM-0014 must be ordered separately.

Stainless steel version available XE-0015SS

Injection Valve Control Valve

XE-0017

5/2 control valve to open/close Injection Valve automatically from signal input from injection machine. Supplied with necessary fittings and pipe, and male quick connector for open-signal



Injection Valve Inlet Hose and Quick Connector



XE-001605

500 mm resin injection hose and fittings complete with resin quick couple connector

XE-001610

1000 mm resin injection hose and fittings complete with resin quick couple connector

XE-001615

1500 mm resin injection hose and fittings complete with resin quick couple connector

Injection Valve Complete with Control Valve and Hoses



XE-0018

Mould injection valve for RTM and Light RTM moulds. Designed to be fitted into threaded Mould Insert MM-1501 (It can also be used with 20mm mould insert MM-0014).

This includes all the parts as listed above

XE-0015 Injection valve with 10mm Nylon Waste pipe

XE-0016 300mm Injection valve inlet hose & quick coupler suitable for connection to Ciject Injection machine

XE-0017 5/2 Control valve and pipe work for connection to Ciject Injection machine

Please note that mould inserts MM-1501 or MM-0014 must be ordered separately

Stainless steel version available XE-0018SS

Mould Air Ejector Valve

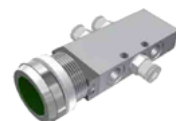


XE-0020

Valve designed for the safe removal of the moulded component from the mould. Includes threaded fitting (MM-2001) for inclusion into the mould laminate, allowing easy removal

Air Ejector Control Button

XE-0021



Pneumatic button to control open and closing of Air Ejector valve. This button can be mounted on the mould framework. Supplied with 2m of 6mm Nylon pipe

Air Ejector Insert Blanking Plug



MM-2007

Machined delrin insert to block Air ejector Insert MM-2001 if not fitting the Air Ejector XE-0020

Air Ejector Insert

MM-2001



Machined steel insert to suit Air Ejector XE-0020. To be laminated into composite moulds. Fitting is included with Air Ejector XE-0020

IMPS - IN MOULD PRESSURE SYSTEM

IMPS readout unit (single channel)



XE-0051

LED readout unit to display pressure reading in bar. 85v-240v supply. Upper display shows current pressure reading in bar. Lower display is used in conjunction with optional control valve (see below) and is set by the operator in bar. If the set pressure is exceeded, the control valve is actuated

IMPS 4 channel switching readout unit

XE-0053

As the readout unit above, but with four sensor inputs and a selector to choose between them

Pressure sensor - Without lead

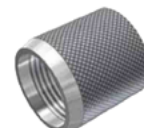


EL-35-0005

Robust ceramic sensor, can be mounted in any position or orientation. Resin can be cured directly against sensor face. 3/4" BSP connection
Pressure range : -1.0 to + 3.0 bar
Other sensing ranges available on request

Pressure sensor mould insert

MM-0030



3/4" BSP metal insert for mounting into composite tools enabling a pressure sensor to be easily mounted and de-mounted.

Pressure sensor mould insert - Blanking plug



MM-0033

Blanking plug to block IMPS Mould Insert when not in use

IMPS control valve (pneumatic)

XE-0052

Pneumatic control valve which can be connected to the readout units and is actuated when the pre-set pressure is exceeded. Can be Normally Open (NO) or Normally Closed (NC)

Sensor cable and connector

XE-0054

25m cable and connector for attachment pf pressure sensor to either a readout/control unit or a CIJECT

XE-0055

10m cable and connector for attachment pf pressure sensor to either a readout/control unit or a CIJECT

VACUUM EQUIPMENTS

Vacuum Catchpot Assembly



XE-0211

Stainless steel vacuum catchpot complete with clear acrylic lid, EPDM vacuum seal and Geka quick couple connection. Stainless steel catchpot incorporates suitable insert for connection directly to standard vacuum mould fittings. Please note that mould insert MM-0014 must be ordered separately

Lid Assembly

AS-0212

Spare Lid assembly for Catchpot with Geka Quick Connector



Catchpot

XE-0500

Resin trap 8 liters capacity
One connection for Vacuum Pump and 3 inlets for pipe 10/12



Inline Resin Trap - GEKA



XE-0213

Stainless steel vacuum resin-trap complete with clear acrylic lid, EPDM vacuum seal and Geka quick connection. Additional Fittings can be provide in the lid to connect inline with vacuum pump, preventing resin being drawn into pump or can be used for additional venting from an RTM Mould

Piège à résine

XE-0218-02

Mounted on wheels ,
translucent lid
Capacity : 30 L



Vaccum regulator and vacuumeter



ACREGUL-MAN-1/4-VACU

To regulate the vacuum between : $-0,95$ bar and atmospheric pressure
Speed up to 100 liters/min.
Vacuumeter and support included

INFRARED THERMOMETER GUN



MATHERMO/IR3

Infrared thermometer temperature with laser gun.
Measure the temperature of RTM tools and resin before injection.
Measure in $^{\circ}\text{C}$ or $^{\circ}\text{F}$

INJECTION MACHINES FOR INFUSION

DIATEX supplies a complete range of infusion RTM machines (technical data sheet availables !)



CIJECT ZERO V2



CIJECT ONE / TWO



CIJECT TWO INFUSION



CIJECT FOUR